

Data of More Than 30 Plant and Animal Species Support Global Biodiversity Scientific Research

By LI Xiaoyue

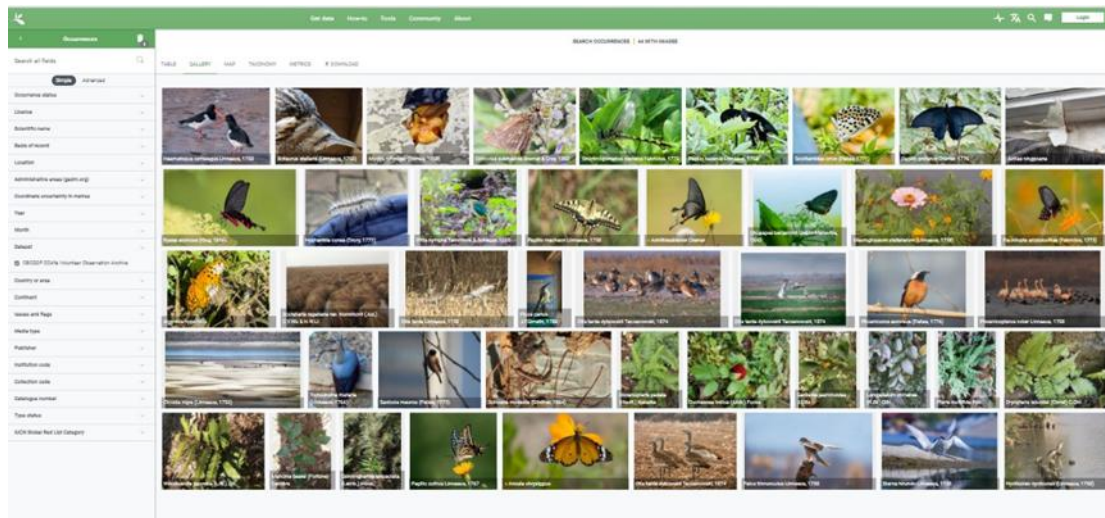
Abstract:

By February 2022, GBIF working group from China Biodiversity Conservation and Green Development Foundation has uploaded the data of more than 30 animal and plant species reported by volunteers across China to the GBIF platform. These 30 species of plants and animals include *Pitta nympha*, *Macroglossum stellatarum*, *Ochlodes subhyalina*, *Scolitantides orion*, *Papilio helenus*, *Papilio protenor*, *Hyphantria cunea*, *Otis tarda*, *Carex tato*, *Picus canus*, *Choaspes benjaminii*, *Papilio xuthus*, *Danaus plexippus*, *Papilio bianor*, *Papilionidae*, *Scincella modesta*, *Saxicola torquata*, *Tichodroma muraria* and *Ciconia nigra*.

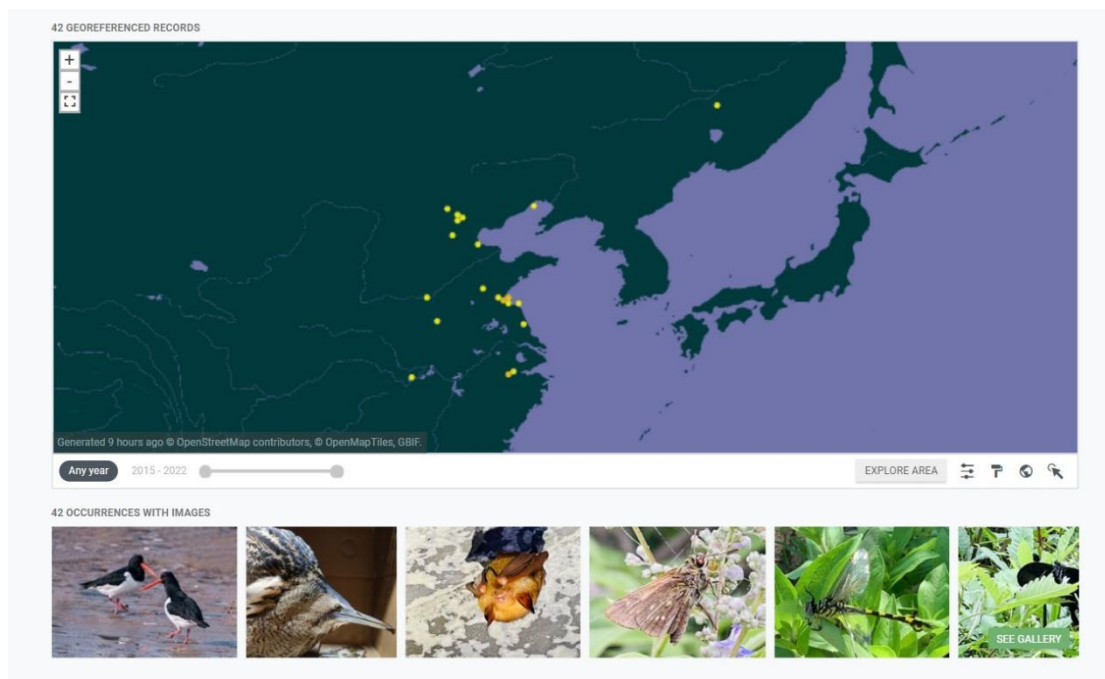
Key words: data of species, Global Biodiversity Information Facility (GBIF), biodiversity, scientific research

Reference

LI Xiaoyue, Data of More Than 30 Plant and Animal Species Support Global Biodiversity Science Research. *Biodiversity Conservation and Green Development*, Vol.1 No.6, May 2022, ISSN2749-9065



GBIF-Other Species Data



GBIF-Species Location